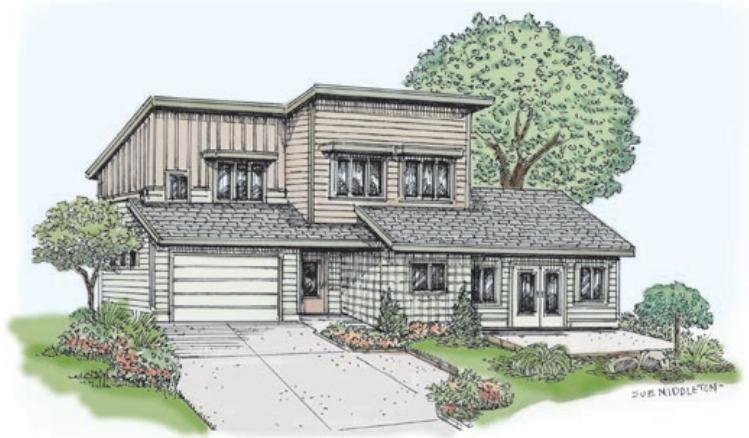




Beautiful "Green" Condominiums in Bend's Westside Old Mill Area



McKinley Greens by Solaire Homes is a small contemporary, "green" and energy efficient condominium project in west Bend, located on McKinley Ave., between the Parkway and the Deschutes River, not far from the Old Mill District. The project consists of three 2-bedroom units in two buildings, all with 2-car attached garages. There are several mature trees on the 10,000 sq.ft. lot. It is estimated that McKinley Greens condominiums will use one-third less energy than a comparable conventional building.

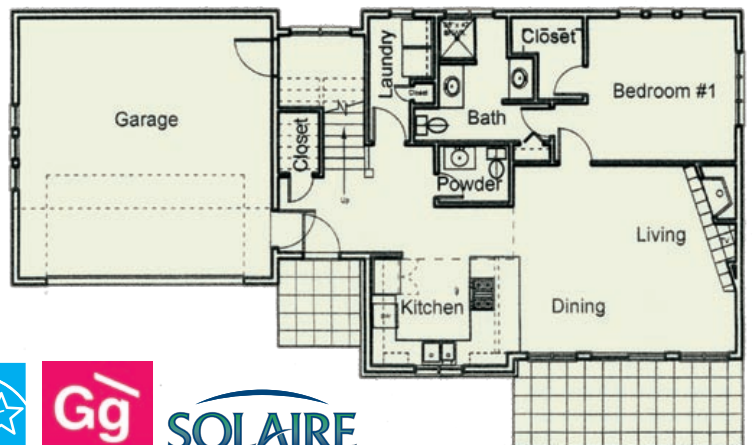
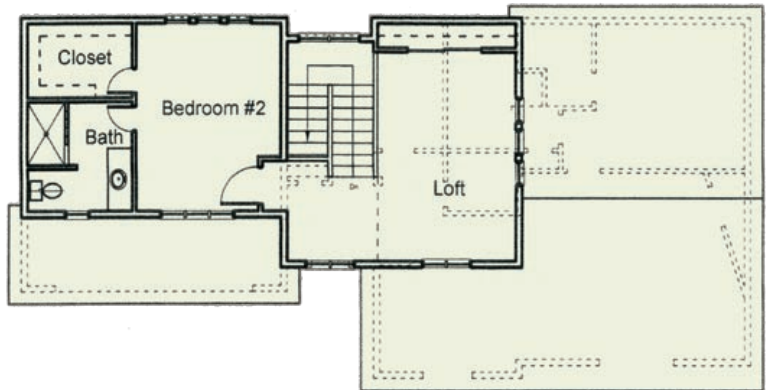
Elm Plan, 42 SW McKinley
Private entry, efficient kitchen, powder room, laundry, cozy dining and living with gas fireplace, first floor bedroom with private bath. Second floor loft with large closet, second bedroom with private bath and walk-in closet. Approx 1600 sq.ft. Price: \$369,000
www.bendecohomes.com

FINISH FEATURES

- Custom hardwood cabinetry
- Slab granite counter tops
- 18-gauge stainless steel kitchen sink
- Stainless steel appliances including cooktop, oven, Energy Star dishwasher.
- Solid surface vanity tops and shower surrounds
- Stained and sealed first floor concrete floors
- P.E.T. carpet and natural linoleum
- Energy Star washer & dryer

GREEN & ENERGY SAVING FEATURES

- Radiant "in-floor" heating
- Tankless hot water with recirculating system
- Whole house fan for cooling; heat/energy recovery ventilation system
- "Blow-in" spider wall insulation (R-23)
- Energy Star windows (U-35)
- FSC and kiln dried framing material
- Low VOC paints, adhesives and lacquers
- Engineered wood floor joists, decking, wall and roof sheathing
- Water efficient toilets and faucets
- Water wise landscaping



CONTACT



Dylan Darling
Real Estate Broker
Tel 541/419-1448
www.dylandarling.com



UMPQUA
B · A · N · K

MORTGAGE LENDING
Paul Steenson
541-312-4857





Beautiful "Green" Condominiums in Bend's Westside Old Mill Area

Ponderosa & Spruce, 40 SW McKinley

Private entry, efficient kitchen, powder room, laundry, cozy dining and living with gas fireplace, private patio with entry to garage. Second floor loft with desk, two bedrooms, each with private bath.

Approx 1300 sq.ft.

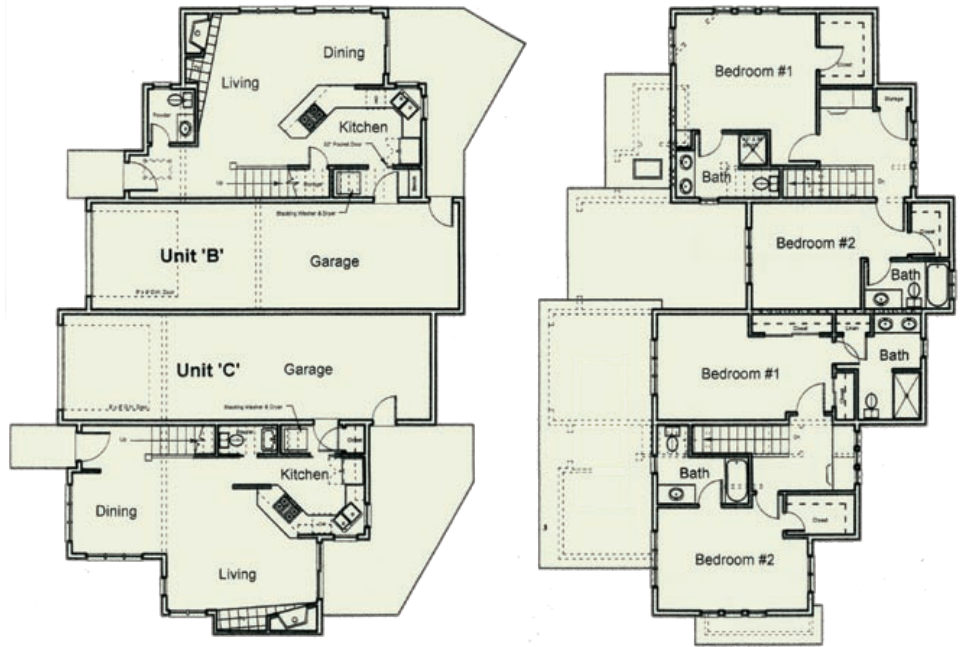
Price: \$299,000

www.bendecohomes.com



FINISH FEATURES

- Custom hardwood cabinetry
- Slab granite counter tops
- 18-gauge stainless steel kitchen sink
- Stainless steel appliances including cooktop, oven; Energy Star dishwasher.
- Solid surface vanity tops and shower surrounds
- Stained and sealed first floor concrete floors
- P.E.T. carpet and natural linoleum
- Energy Star washer & dryer



GREEN & ENERGY SAVING FEATURES

- Radiant "in-floor" heating
- Tankless hot water with recirculating system
- Whole house fan for cooling; heat/energy recovery ventilation system
- "Blow-in" spider wall insulation (R-23)
- Energy Star windows (U-35)
- FSC and kiln dried framing material
- Low VOC paints, adhesives and lacquers
- Engineered wood floor joists, decking, wall and roof sheathing
- Water efficient toilets and faucets
- Water wise landscaping



CONTACT

Dylan Darling
Real Estate Broker
Cell 541/419-1448



Prudential
Northwest Properties